

CITY OF BRIDGETON

SIGN PERMIT

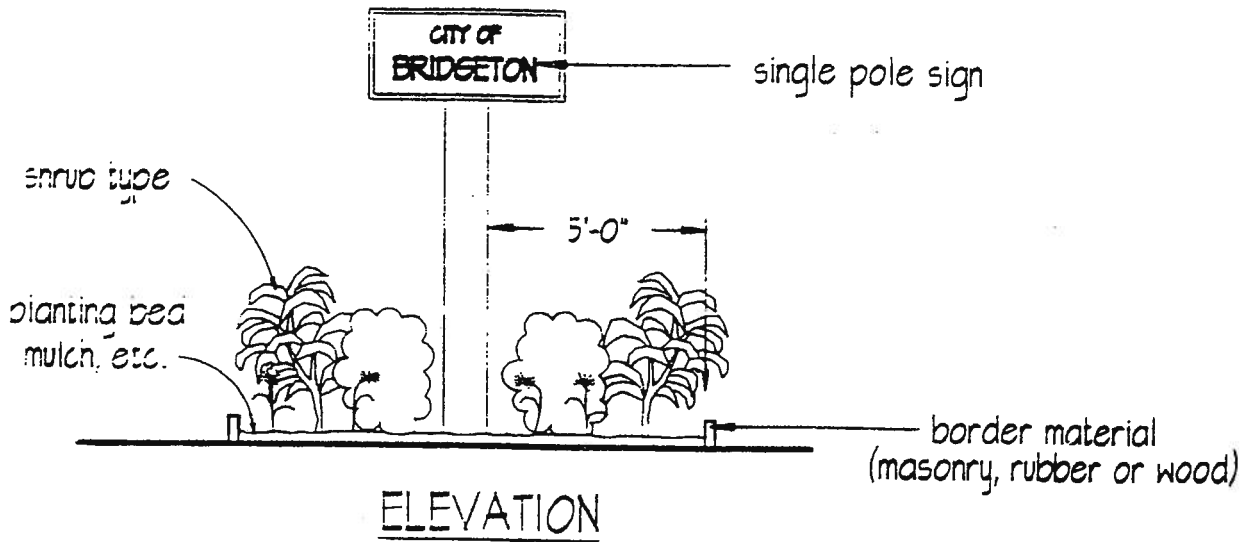
An application for a sign permit **must have** the following items in order to be processed:

1. Four (4) copies of a drawing that shows size, color, material and copy that will be on the sign.
2. Four (4) site plans are required for pole signs and ground signs. They are to show:
 - A) Location of sign
 - B) Landscape Plan (see attached)

This is required for new or refacing of pole and ground signs.

3. Wall signs require the elevation of the building that the sign is going to be placed on. It shall include the square footage of the face and square footage of all windows and doors.
4. Window signs require the square footage of the windows and size of the sign.
5. If located in a shopping center with a sign package, an approval letter (on their letterhead) must be submitted prior to the Design and Review Board deadline for the next meeting or the application will not be placed on the agenda.
6. New designs may not be introduced at the Design and Review Board meeting.

Samples



TYPICAL SHRUBS
HIGH PROFILE

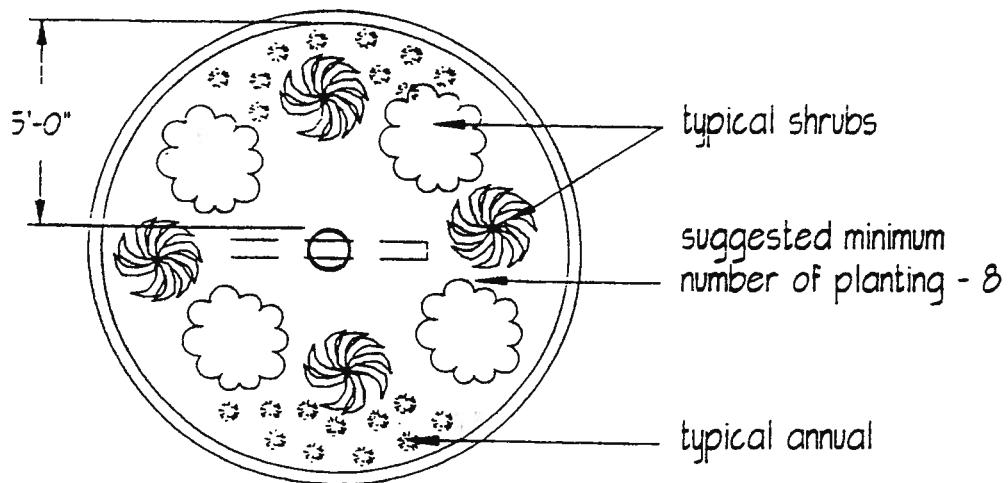
- BURNING BUSH
- DWARF INK BERRY
- DWARF HOLLY

TYPICAL SHRUBS
LOW PROFILE - MIN. 2 GAL

- DWARF BURNING BUSH
- JUNIPERS
- DWARF PYGMY BAR BERRY
- DENSIFORMA YEW

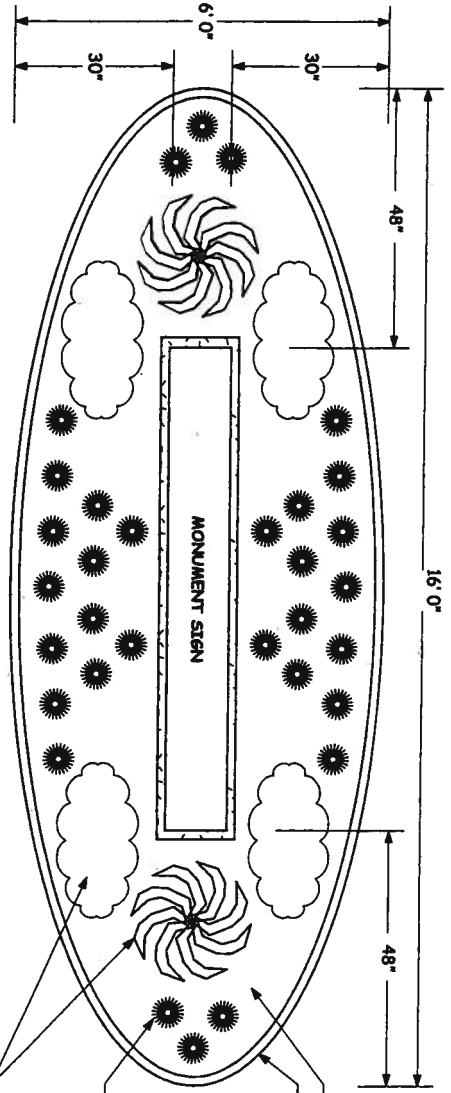
TYPICAL ANNUALS

- TULIPS - SPRING
- CROCUS - SPRING
- JONQUILS - SPRING
- BEGONIAS - SUMMER
- PETUNIAS - SUMMER
- MUMS - FALL



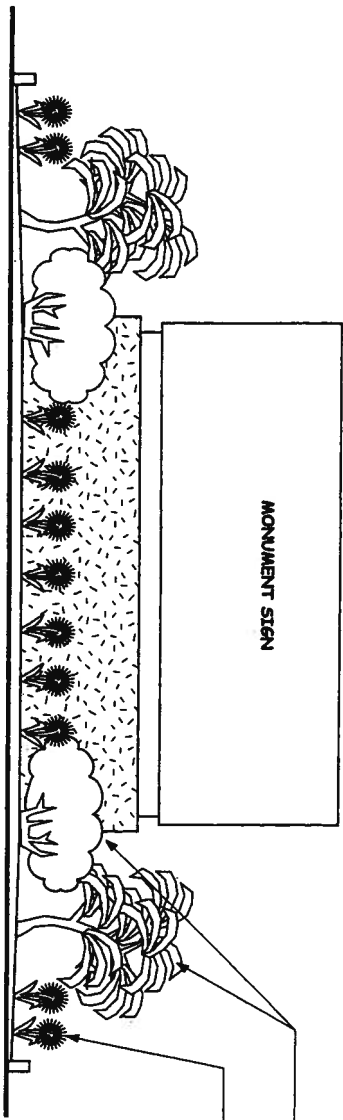
SINGLE POLE SIGN WITH SUGGESTED LANDSCAPING

DATE : 11/28/95

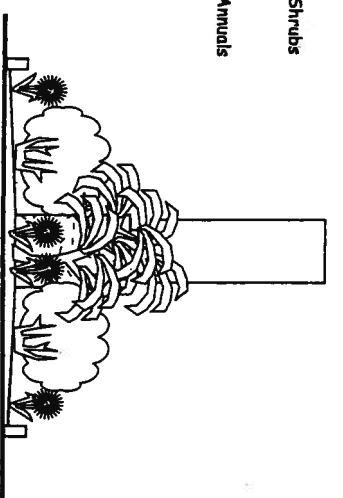


PLAN VIEW

- Planting bed mulch
- Masonry or other border material
- Typical Annuals
Spring: Tulips, Crocus, Jonquils
Summer: Begonias, Petunias
Fall: Mums
- Typical Low Profile Shrubs
 - Junipers
 - Dwarf Burning Bush
 - Densiflora Yew
 - Dwarf Pygmy Bar Berry



ELEVATION



SIDE VIEW